



# INNOTOOL

LOOK FORWARD



## INNOFIT

**VIBRATION DAMPED PROLONGATION**

- Modular •
- Stable •
- Damped •

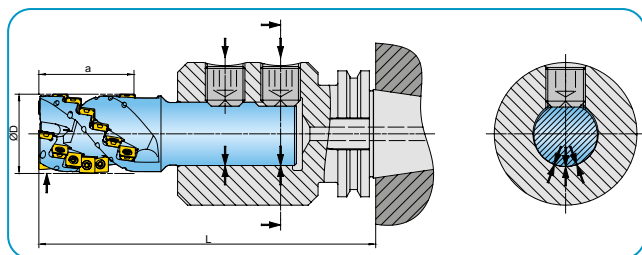
## Product Description

Our proven **InnoFit** modular adaption system is expanded by a new vibration damped prolongation for shell type milling cutter in the length of 200 mm.

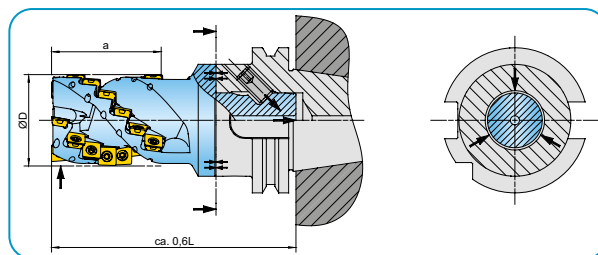
This new **InnoFit** prolongation can be combined with all standardized spindle adaptors and solid prolongations.

The vibration damped prolongations are available with centering- $\varnothing 27$ ,  $\varnothing 32$  and  $\varnothing 40$  mm in the modular Z5-size, i.e. outer  $\varnothing$  78mm. The smaller Z4-size with outer- $\varnothing$  of 61mm is available with centering- $\varnothing 22$  and  $\varnothing 27$ .

## Weldon versus InnoFit



Weldon -> vibrations



InnoFit -> 40% shorter

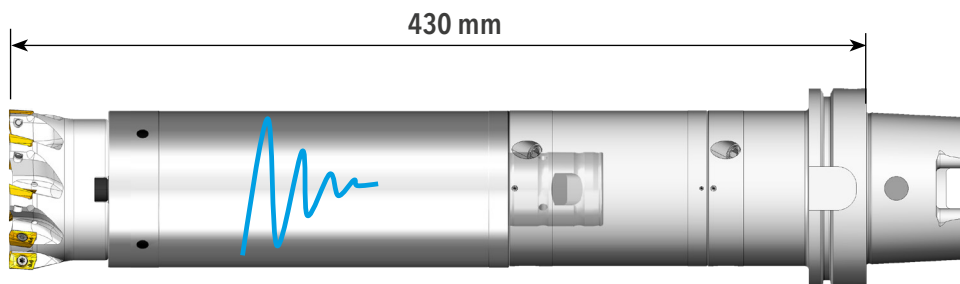
- High axial clamping force
- Compact tool assembly
- Large face contact

## Application Range

The new standardized **InnoFit** damped prolongations are mainly designed to be applied at extremely long extensions when radial loads (milling) need to be handled.

Especially from  $> 4xD$  often an operation is possible only by usage of vibration damped tool combinations.

The below picture shows a modular tool sample in an overall length of 430 mm with an milling cutter in  $\varnothing 80$  mm.



EB.080.002

Z5SM27UA200

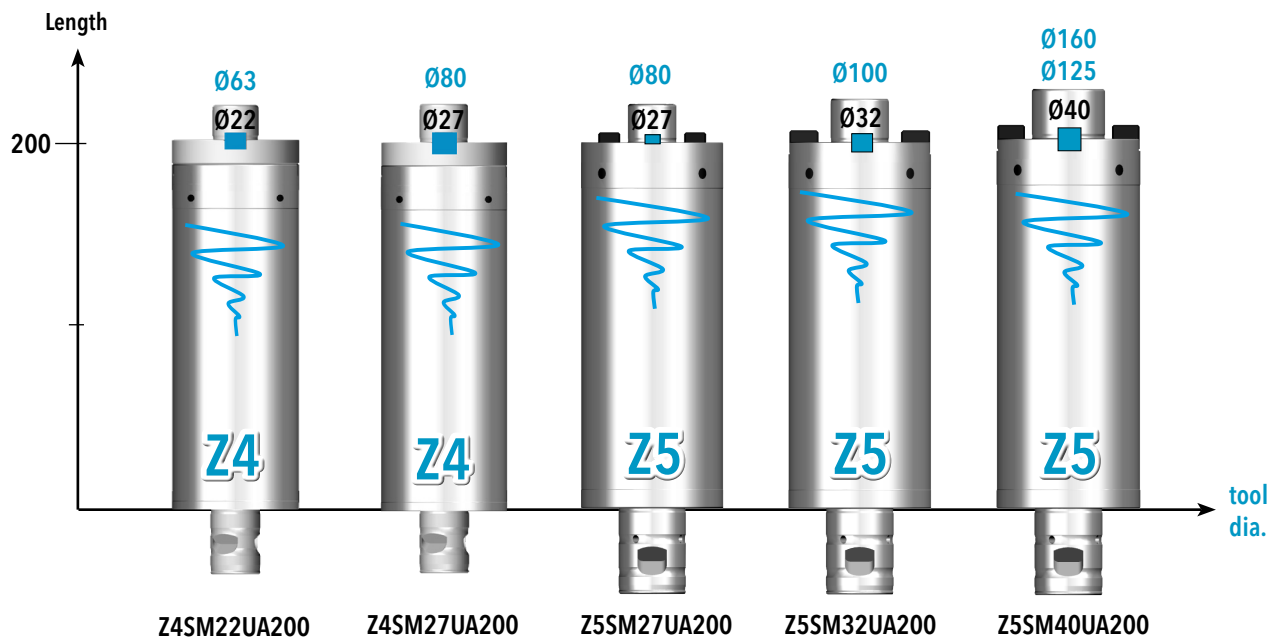
Z5Z5SA100

HSKA100Z5SA080



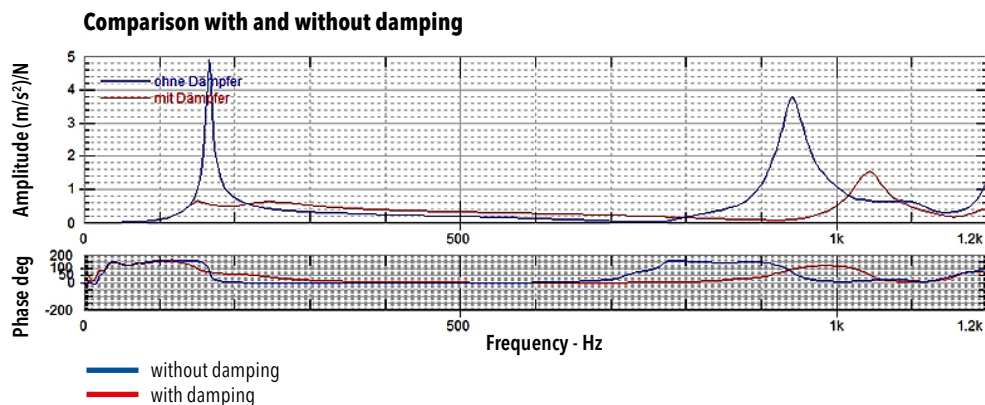
## Technical Features

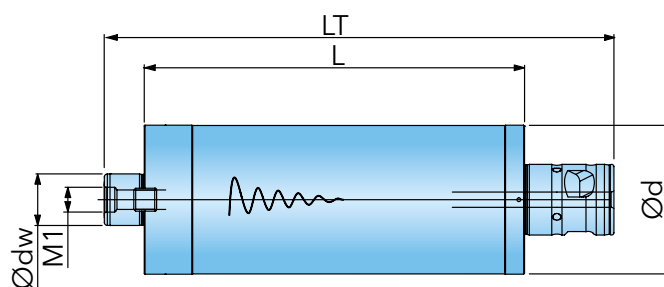
The standardized 200 mm **InnoFit** prolongations are designed and tuned for the typical standard milling tool weights according to each centering diameter and cannot be misaligned.



## Advantages

- Better tool life due to damping.
- Increased productivity because:
  - a) larger DOC can be machined due to the damping effect and
  - b) often higher feed rates could be achieved with usage of a damped combination.
- At long tool combination a better surface quality can be obtained.
- Can not be misaligned!
- Modular applicable with **InnoFit** standard MOD40 and MOD50
- Significant improvement in damping versus standard prolongation (see graph)



**INNOFIT****MODULAR 40/50 (ANTI VIBRATION EXTENSION)**

Designation	d	dw	LT	L	M1	MOD		
Z4SM22UA200	61	22	247	200	M10	40	✓	5,4
Z4SM27UA200	61	27	247	200	M12	40	✓	5,5
Z5SM27UA200	78	27	247	200	M12	50	✓	9,1
Z5SM32UA200	78	32	247	200	M16	50	✓	9,2
Z5SM40UA200	78	40	247	200	M20	50	✓	9,3